

**Frost® Links, Inc.**

**Steps To Purchasing Chain and Trolley Systems**



# Frost® Links, Inc.

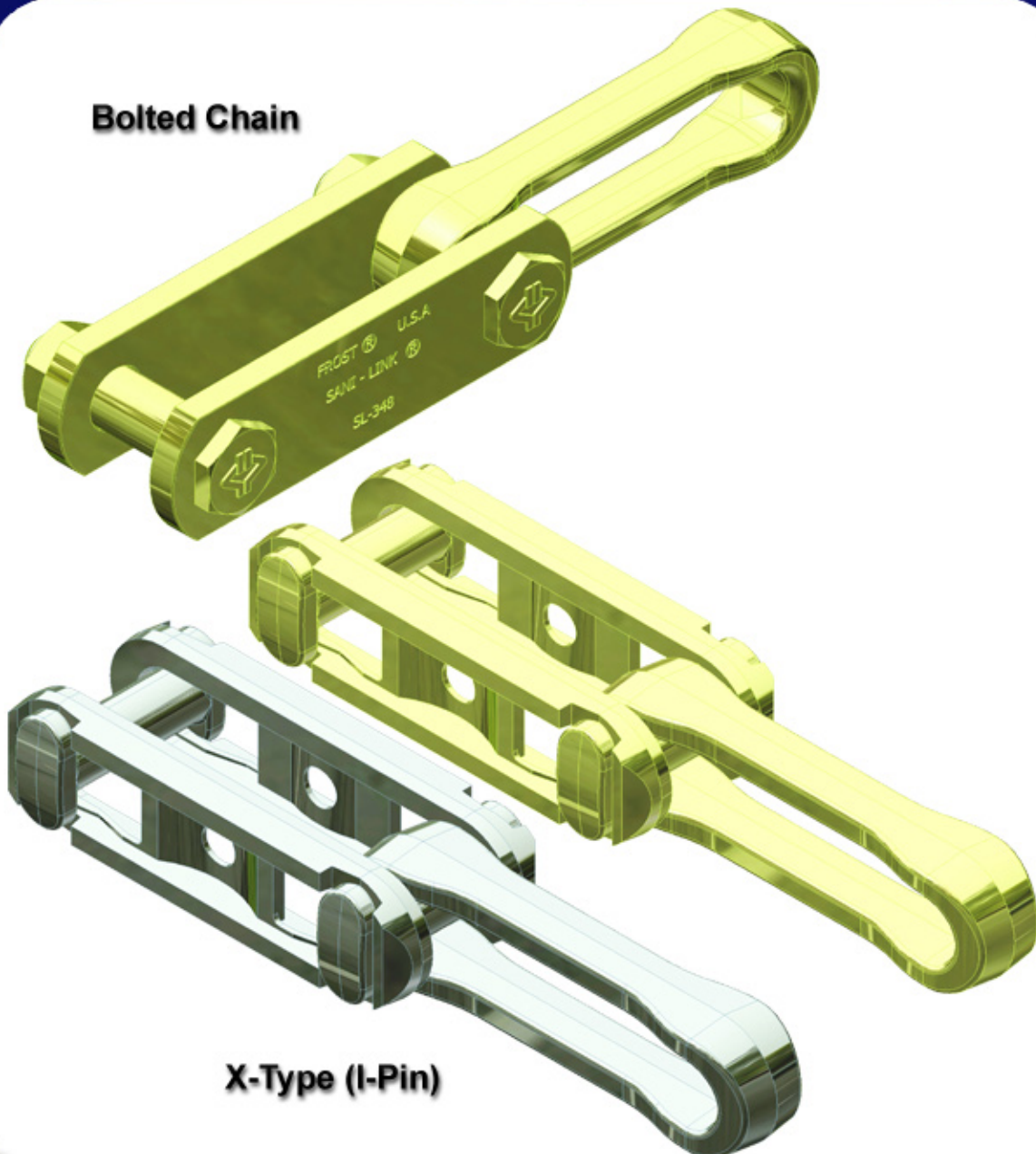
## Step 1: Choose Your Chain

The first step in the ordering process is to determine whether you want bolted or x-type (i-pin) chain.

X-Type chain (I-Pin) and Bolted chain are available in the following platings:

- 1.) Stainless Steel (\*i-pin only)
- 2.) Yellow Zinc Di-Chromate
- 3.) Silver Zinc

**Bolted Chain**



**X-Type (I-Pin)**

\*Di-Chromate plating is the most common and is more effective than silver plating for corrosion protection.

\*\*Stainless steel is becoming more commonly used for plated chains.



# Frost® Links, Inc.

## Step 2: Choose Your Trolleys

The second step in the ordering process is to determine what type of plating you want for your trolleys.

Trolleys come in the following platings:

- 1.) Stainless Steel
- 2.) Yellow Zinc Di-Chromate
- 3.) Silver Zinc



## Step 3: Choose Your Attachments and Hardware

The third step in the ordering process is to decide which attachments and which plating you require for both the attachments and the hardware (nuts, bolts and lock washers).

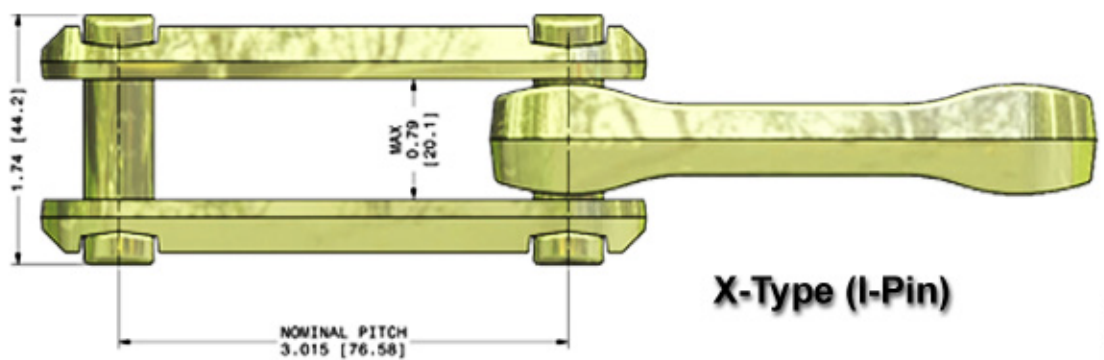
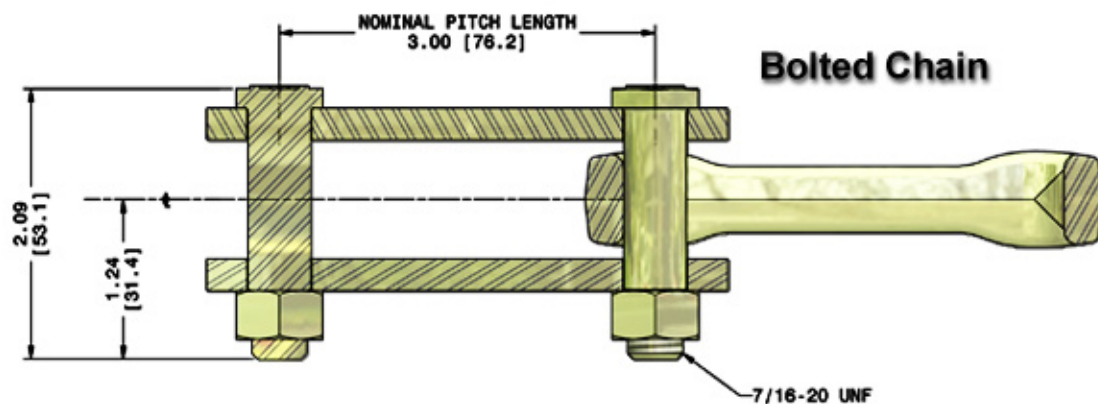
The attachments and the hardware are available in the same platings as the trolleys.





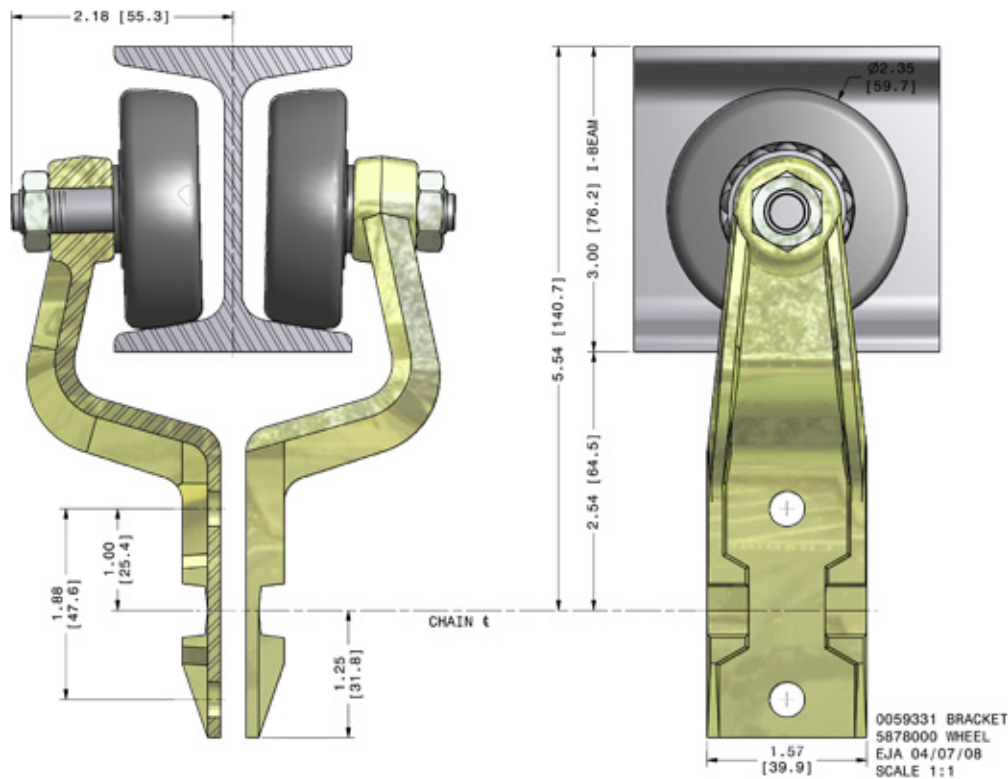
# Frost® Links, Inc.

## Chain Engineering Drawings

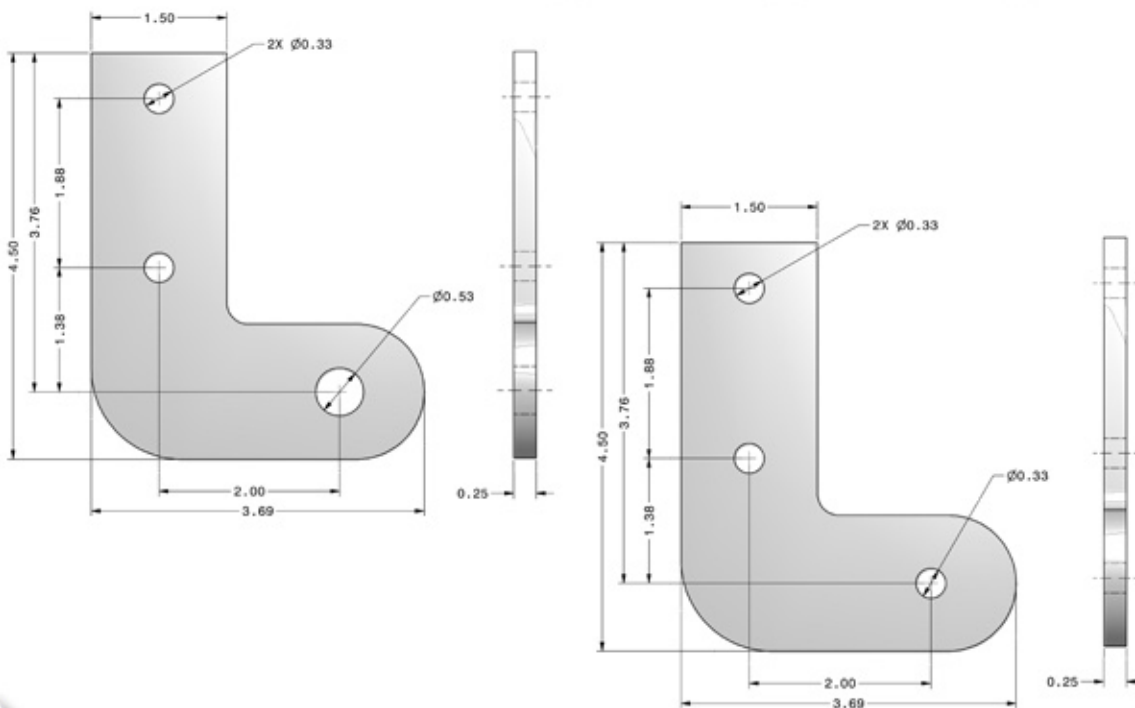


# Frost® Links, Inc.

## Trolley Engineering Drawings

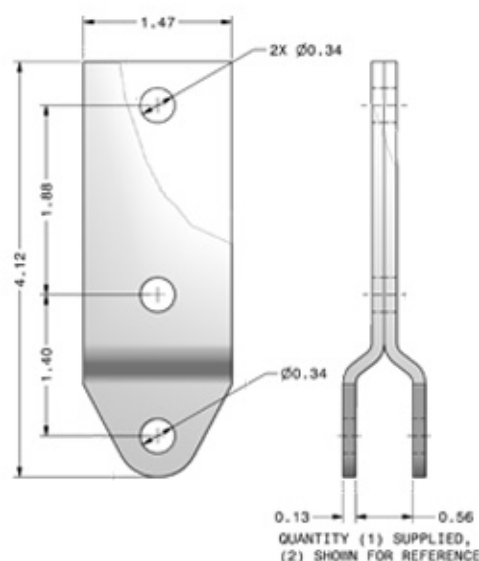
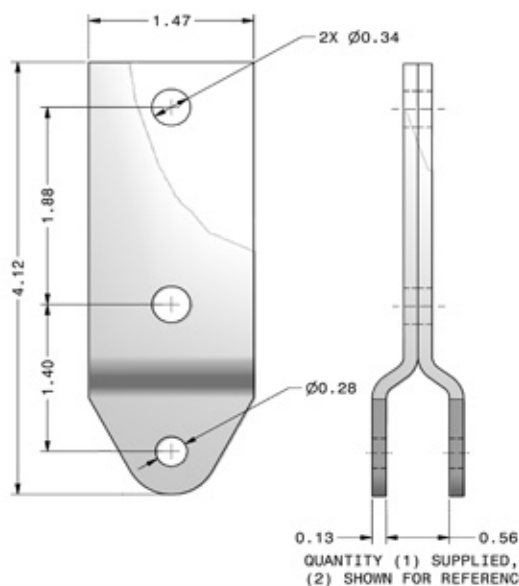
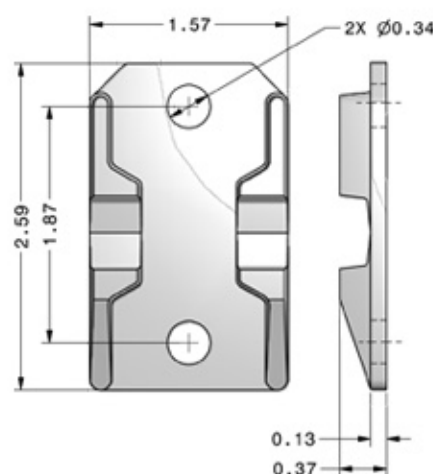
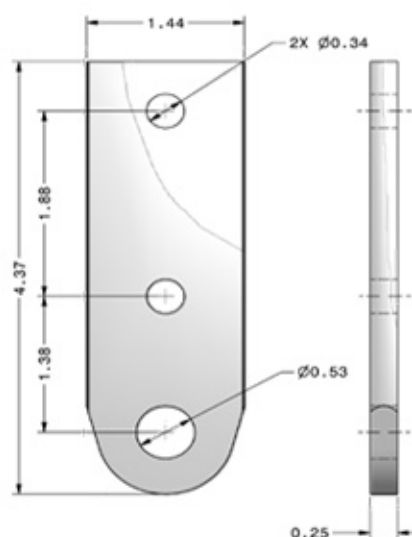
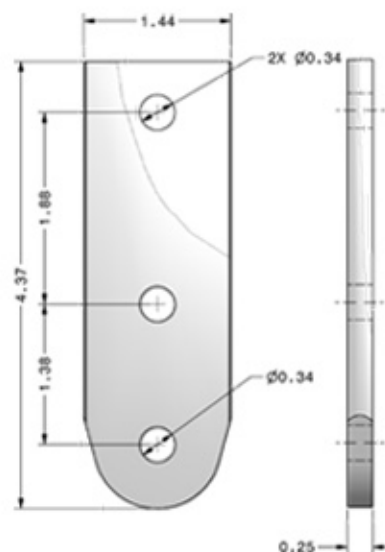
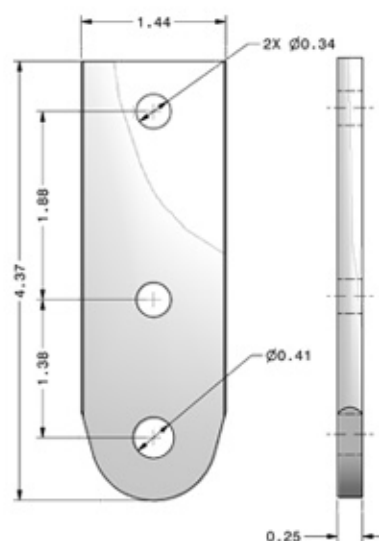


## Attachment Engineering Drawings



# Frost® Links, Inc.

## Attachment Engineering Drawings

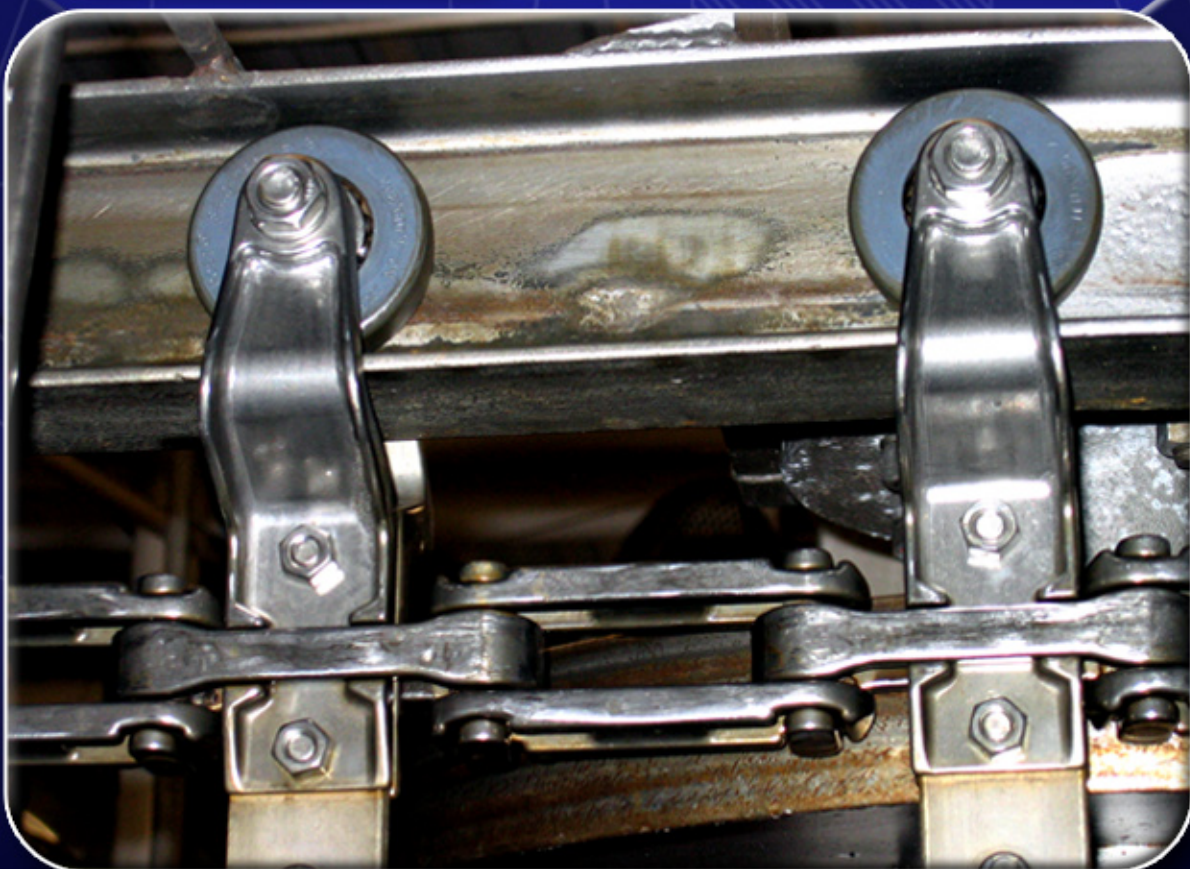
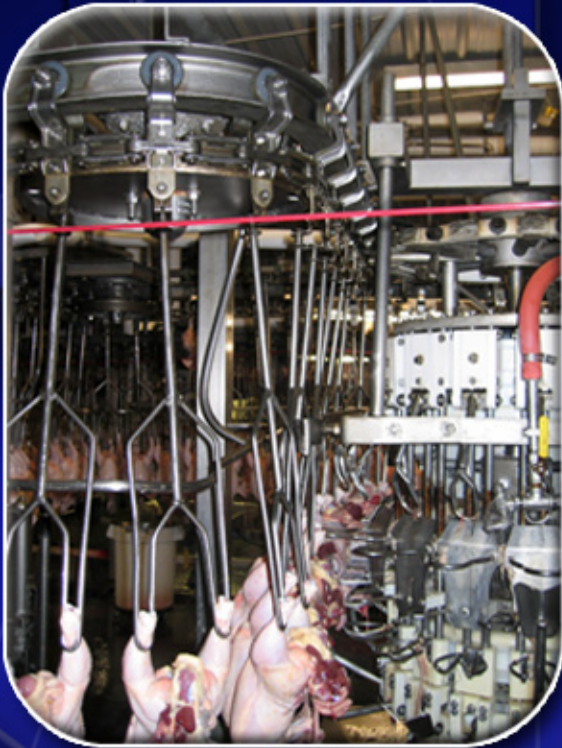




# Frost® Links, Inc.

## Step 4: Choose Your Chain Configuration

The fourth and final step in the ordering process is to determine which chain configuration / trolley spacing you require for your system. You can choose from 6" and 12" trolley spacings.





# Frost® Links, Inc.

## Steps To Purchasing Chain and Trolley Systems



To place an order or for more information,  
please contact a member of our Frost sales team.

## Frost® Links, Inc.

2900 Northridge, N.W.

Grand Rapids, MI 49544 USA

Tel: 616.785.9030 or Fax: 616.785.9430

E-mail: [sales@frostlinks.com](mailto:sales@frostlinks.com)

1.888.244.0920

[www.frostlinks.com](http://www.frostlinks.com)

All of the product shown have been products of Frost.

Frost is a registered trademark of Frost Incorporated

© Copyright 2008 by Frost Incorporated

Rev. 1A 03.27.08

