



Overhead Conveyor Chain, Trolleys & Attachments for Red Meat Processing Facilities



Overhead Chain & Trolley Conveyor Experts

Frost Links, a division of Frost Inc., designs and manufactures 2", 3", 4" and 6" X-Type Chain, Trolley and Attachment assemblies for Beef and Pork Processing Facilities across North America. Our Sales and Engineering teams possess years of experience providing Production and Maintenance Managers insight on how to keep their lines running smooth and how to achieve maximum product life.

PREFERRED OVERHEAD CONVEYOR PRODUCTS

Frost Chain and Trolley assemblies are preferred by most plants due to their high success rate of operating within extreme production environments. You will find Frost products operating in the Bleeding, Dressing, Eviscerating, and Cooler stages of Protein Processing. All of Frost's Chain and Trolley assemblies are built using superior materials that are machined and assembled by highly-skilled employees. Frost offers the following Protein Processing Chains:

Beef Chain Assemblies

- Harvest Floor
- Bleed
- Main
- Viscera
- Head & Tongue
- Tripe
- Heart & Liver
- Pluck
- Hot Box
- Holding Cooler
- Bloom
- Sales Cooler
- Main Fab
- Rounds
- Chuck
- Hides

Hog Chain Assemblies

- Main Harvest
- Scalding
- Singer
- Final Wash
- Blast Chill
- Cooler
- Side Finger

EXCEPTIONAL CUSTOMER EXPERIENCE

On-Time Delivery

Consistently delivering what you want, when you want it.

Reliable Quality

Every chain is completely pull tested prior to delivery.

USA Made

All Chain & Trolley assemblies are built in the USA.

Demonstrated Value

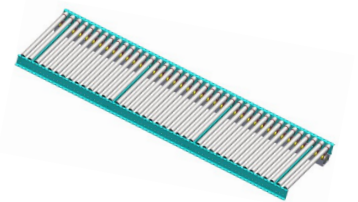
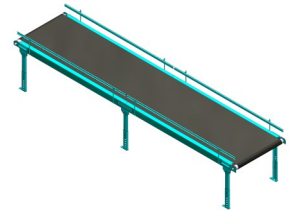
Ability to provide longer life due to quality and strength of materials.

CONVEYANCE SOLUTIONS PROVIDER

Frost Links is part of the Frost Family of Companies which specializes in Overhead, Ground-based, and Engineered Style Conveyor Systems and Components. Frost's companies provide proven material handling solutions to satisfy conveyance challenges in a variety of Automotive, Food, Distribution, Furniture, Industrial, and General Manufacturing applications. Each of our three manufacturing facilities are located in the Midwestern United States where we employ a top-tier workforce.



Production Industries Inc.



Steps to Purchasing Chain & Trolley

1. CHOOSE YOUR CHAIN SIZE

Determine your X-Type chain size:

- 2" • 4"
- 3" • 6"



2. CHOOSE YOUR CHAIN MATERIAL

Frost offers the following Smooth Link chain materials:

- Black
- Yellow Zinc Dichromate
- Stainless Steel

3. CHOOSE YOUR TROLLEY & WHEEL CONFIGURATION

Determine the type of Trolley bracket and wheel you require:

- Stainless Steel or Plated Bracket
- Blue Poly or Steel Wheel



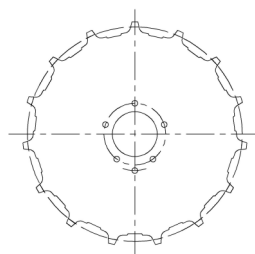
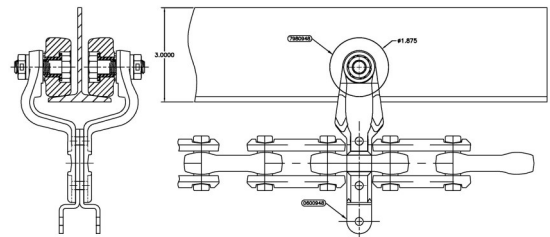
4. CHOOSE YOUR HANGING ATTACHMENTS & HARDWARE

Frost provides standard attachments that come in different sizes and finishes:

- B Attachments • I Attachments
- C Attachments • T-Bars
- H Attachments • Fingers

5. CHOOSE YOUR CHAIN & TROLLEY CONFIGURATION

Determine trolley spacing on your chain assembly. Frost can assemble Chain, Trolleys and Attachments to your spacing requirements.



6. CHOOSE TRACTION WHEEL & SPROCKET

Determine quantity, size and finish of traction wheels and sprockets.

Improving Overhead Conveyor Performance

CHAIN WEAR MONITORING SYSTEM

We recommend periodically reviewing your conveyor system for chain wear. Portable and Permanent Chain Wear Monitoring Systems are a great way to help predict failures before they happen to keep your system running smoothly and to eliminate costly downtime.

Benefits include:

- Monitors can be configured to any Red Meat Chain System
- No dedicated computer needed to run the system
- 24/7 chain monitoring
- Simple interface that is easy to use
- Monitor interface anywhere in your facility



CONVEYOR LUBRICATION SYSTEM

Properly lubricating your chain assembly is the best way to increase its life. Chain lubrication is needed for the following:

- Prevent premature wear on pins and chain
- Flush out debris and foreign materials
- Help ensure chain's engagement to sprocket
- Inhibit rust and corrosion
- Reduce heat in chain system
- Cushion impact caused from loading chain

GET IN TOUCH

- ☎ 616.453.7781
- 🌐 frostlinks.com
- ✉ frost.sales@frostinc.com
- 📍 2020 Bristol Ave NW
Grand Rapids, MI 49504

